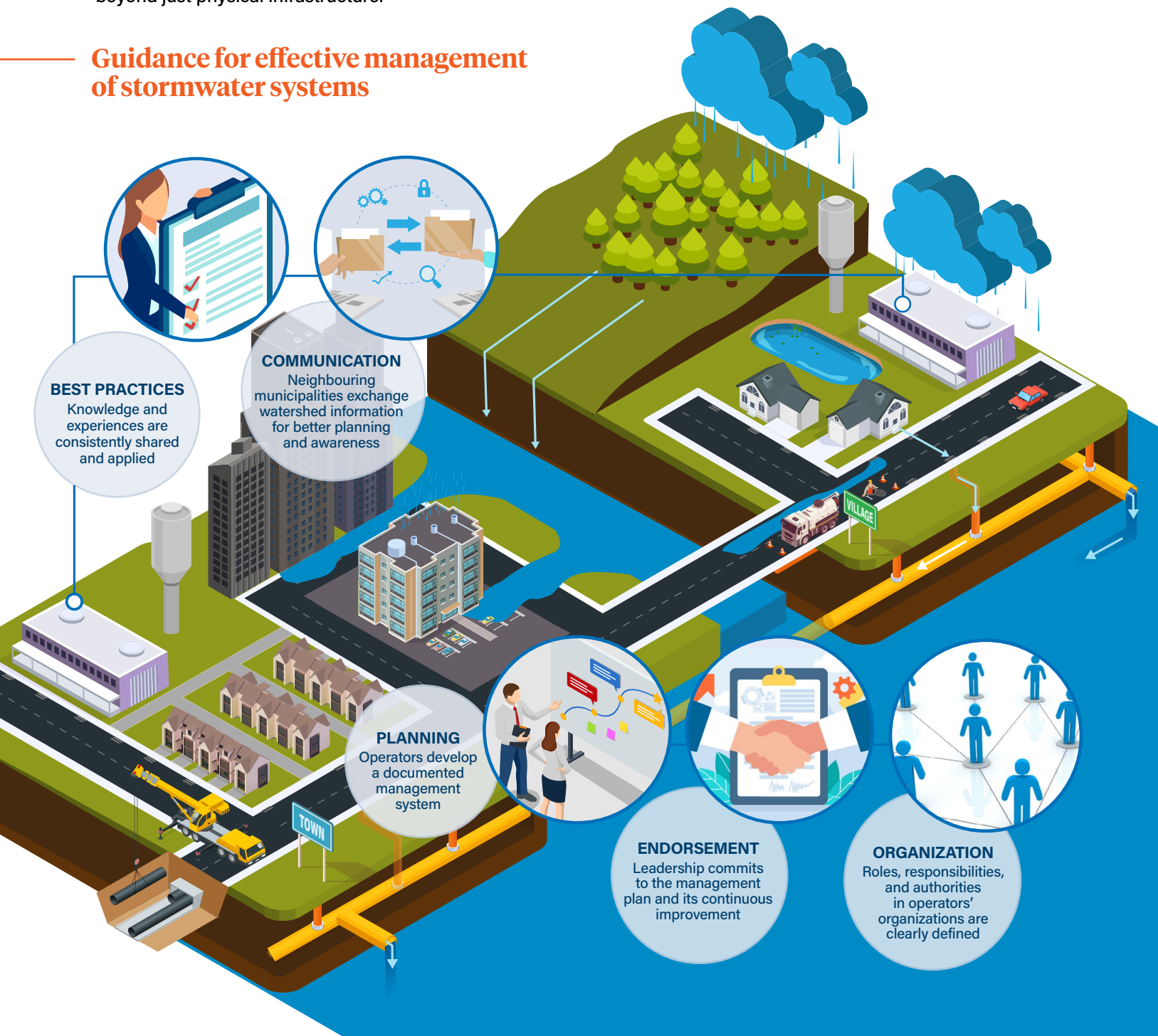


Helping manage growing stormwater systems service demands across Canada

CSA W211:21, Management standard for stormwater systems

With increased urbanization and more extreme weather, service demands on stormwater systems across the country are growing. The National Standard of Canada, CSA W211:21, a new standard CSA W211:21 introduces a holistic approach to managing critical water infrastructure. Any municipality can use this National Standard of Canada to help improve the climate change resiliency of their communities by implementing proactive and preventative strategies beyond just physical infrastructure.

Guidance for effective management of stormwater systems



By implementing the guidance of CSA W211:21, your municipality can:

Who will benefit from this Standard?

- Owners and operators of stormwater systems
- Water utilities
- Governments at all levels
- Municipal inspectors



Better understand your system

Improved planning, reviews, and communication can result in a better understanding of stormwater system inputs and outputs and a more efficient operation of the system



Increase resiliency and safety of your community

Leverage knowledge of volunteer technical experts that developed the Standard to help better protect your community from impacts of extreme weather events and improve public safety



Reduce operational costs

With ongoing continual improvements of the stormwater infrastructure, you can achieve efficiencies and reduce your operational costs

What should a management plan include?

- Watershed information
- Stormwater policies
- System description
- Organizational structure
- Document management
- Risk management processes
- Operational planning
- Emergency management planning
- Internal audits and continuous improvement



Improve regulatory compliance

Implementing stormwater management best practices and processes can contribute to meeting requirements of regulations and bylaws more consistently and reducing the risk of environmental violations and penalties



Enhance environmental protection

Considering various risk factors and planning for emergency situations, you can reduce their occurrence or impact on the environment

Get view access to CSA W211:21 at no cost

 csagroup.org/store

 naturalresources@csagroup.org

For more on CSA Group research and standards for improved flood resilience of communities, visit csagroup.org/FloodResilience



This work was funded by the Standards to Support Resilience in Infrastructure Program at the Standards Council of Canada (SCC). For more on what SCC is doing to address climate resilient infrastructure, visit the [Climate and Sustainability](#) web page.